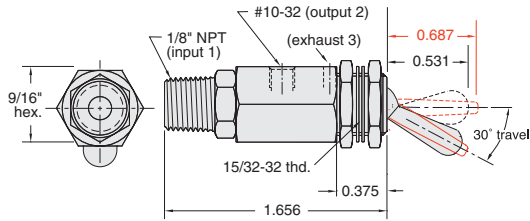
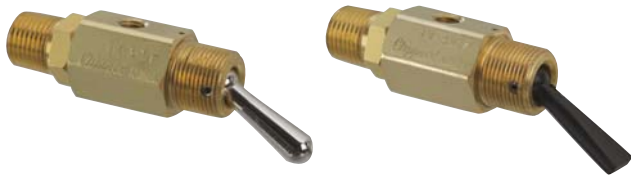


# 3-WAY TOGGLE VALVES



## 2 Pos. N.C. Poppet w/Momentary Actuation



**Input Pressure:** 300 psig max.

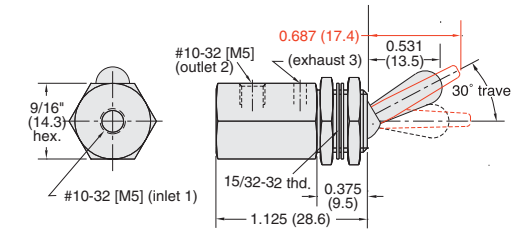
**Air Flow:** 4.0 scfm @ 50 psig; 6.8 scfm @ 100 psig

**Force For Full Stem Travel:** 12 oz. nominal



Part No.	Description
<u>TV-3MP</u>	2 Position Poppet Valve, NP Steel Toggle
<u>TV-3MFP</u>	2 Position Poppet Valve, Plastic Toggle

## 2 Pos. N.O. Poppet w/Momentary Actuation



**Input Pressure:** 150 psig/10 bar max.

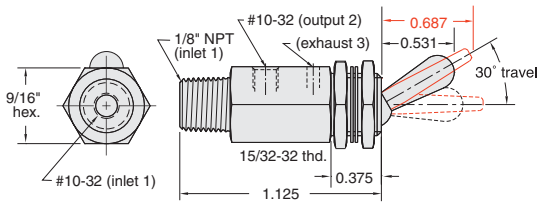
**Air Flow:** 4.0 scfm @ 50 psig; 6.8 scfm @ 100 psig;  
170 lpm @ 6 bar

**Force For Full Stem Travel:** 12 oz. nominal



Part No.	Description
<u>TVO-3M</u>	2 Position Spool Valve, NP Steel Toggle, #10-32
<u>TVO-3M-M5</u>	2 Position Spool Valve, NP Steel Toggle, M5
<u>TVO-3MF</u>	2 Position Spool Valve, Plastic Toggle, #10-32
<u>TVO-3MF-M5</u>	2 Position Spool Valve, Plastic Toggle, M5

## 2 Pos. N.O. Poppet w/Momentary Actuation



**Input Pressure:** 150 psig max.

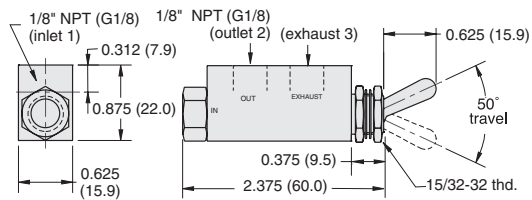
**Air Flow:** 4.0 scfm @ 50 psig; 6.8 scfm @ 100 psig

**Force For Full Stem Travel:** 12 oz. nominal



Order Information	
<u>TVO-3MP</u>	2 Position Spool Valve, NP Steel Toggle
<u>TVO-3MFP</u>	2 Position Spool Valve, Plastic Toggle

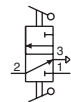
## 2 Position Poppet Valves



**Input Pressure:** 300 psig/21 bar max.

**Air Flow:** 14 scfm @ 50 psig; 25 scfm @ 100 psig;  
600 l/min @ 6 bar

**Force For Full Stem Travel:** 16 oz. nominal



Part No.	Description
<u>MITV-3</u>	2 Position Poppet Valve, 1/8" NPT
<u>MITV-3-MG</u>	2 Position Poppet Valve, G1/8

## 15/32 Panel Mounting Nut



Brass with black or bright nickel finish

Part No.	
<u>11406-1</u>	Black
<u>11406-2</u>	Bright